

A rectangular flower bed has a width of 2 meters and a length of $(6x + 2)$ meters. The area of the flower bed is 13 square meters. Complete each statement.

Part A The length of the flower bed is meters.

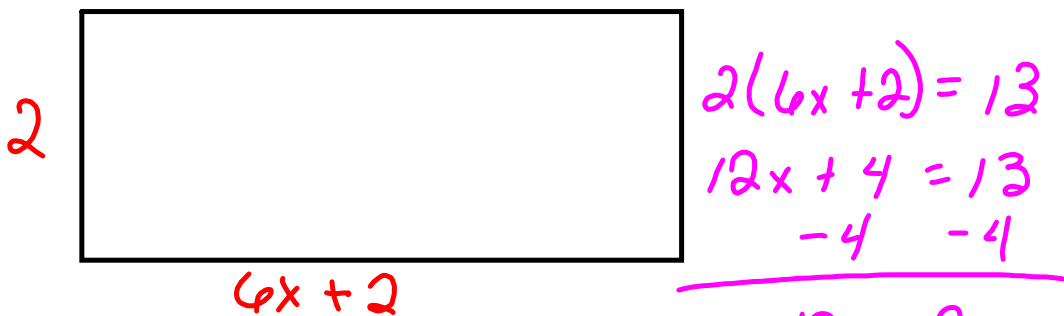
Part B The perimeter of the flower bed is meters.

Part C To enclose 8 of these rectangular flower beds, meters of fencing is needed.

SHOW TOOLS

SHOW TOOLS

SHOW TOOLS



Area = 13 sq m

Part A \Rightarrow Length $\Rightarrow 6x + 2$
 $6\left(\frac{3}{4}\right) + 2 = \frac{13}{2}$

Part B \Rightarrow Perimeter $\Rightarrow 2(2) + 2\left(\frac{13}{2}\right)$
 $4 + 13 = 17$

Part C \Rightarrow Fence for 8 flower Beds $\Rightarrow (17)(8)$
 136

\uparrow
 This what was
 Missing on the
 Review Sheet.