

Review For Test on 9/13/2024

$$\begin{array}{r} 8) \quad 263.50 \\ - 100.00 \\ \hline \end{array}$$

$$263.50 \div \underline{15.50} = 17 \text{ hrs}$$

$$263.50 = 15.50x + 100.00$$

3)

Year	1	2	3	4
Profit	5.8	3.2	-8.8	-1.1

$$\text{Total Profit} \Rightarrow 5.8 + 3.2 - 8.8 - 1.1$$

$$\text{Ans: 1} \Rightarrow -0.9$$

$$\text{Ans: 2} \Rightarrow \text{Decrease}$$

$$\text{Ans: 3} \Rightarrow -0.9 \text{ or } -900.00$$

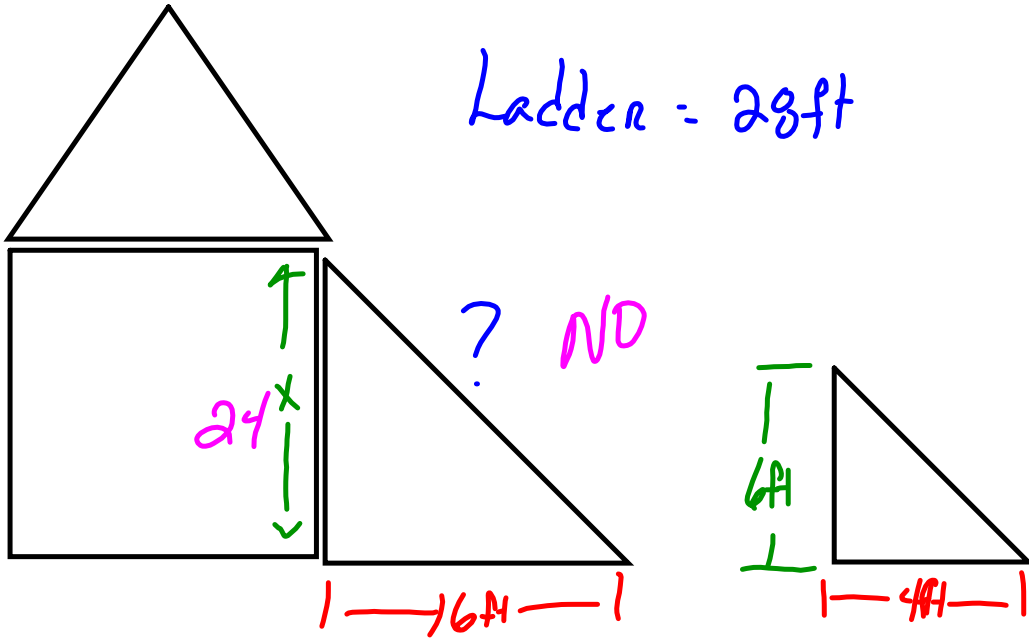
$$\text{Ans: 4} \Rightarrow -900.00$$

$$\rightarrow) P + \frac{1}{2} = \frac{1}{2}$$

$$\frac{-\frac{1}{2}}{2} \quad \frac{-\frac{1}{2}}{2}$$

$$P = 0$$

13)



$$\frac{x}{6} = \frac{16}{4}$$

$$\frac{4x}{4} = \frac{96}{4}$$

$$x = 24$$

$$a^2 + b^2 = c^2$$

$$24^2 + 16^2 = c^2$$

$$576 + 256 = c^2$$

$$832 = c^2$$

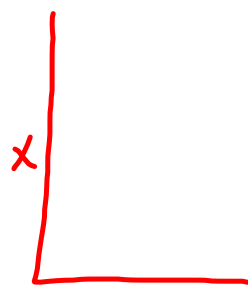
$$28.84 \approx c$$

9)



18"

1.5'



8.5 ft

$$\frac{4}{1.5} = \frac{x}{8.5}$$

$$\Rightarrow \frac{34}{1.5} = \frac{1.5x}{1.5}$$

$$22.\bar{6} = x$$

$$22.7 \approx x$$

