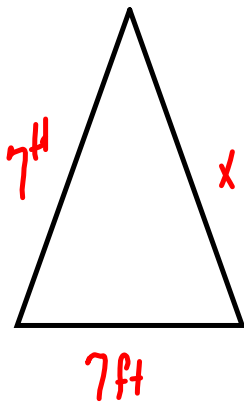


b) Perimeter
is less than 28 feet



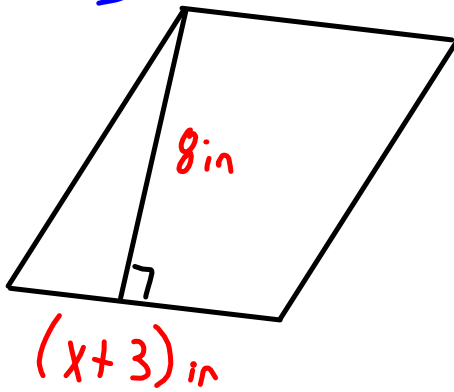
$$7 + 7 + x < 28$$

$$14 + x < 28$$

$$\begin{array}{r} -14 \\ -14 \end{array}$$

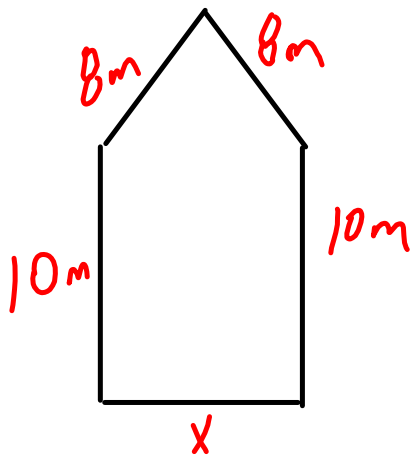
$$x < 14$$

iii) Base is greater than
the height



$$\begin{array}{r} x+3 > 8 \\ -3 \quad -3 \\ \hline x > 5 \end{array}$$

12) Perimeter is less than
or equal to 51 meters.



$$16 + 20 + x \leq 51$$

$$26 + x \leq 51$$

$$\begin{array}{r} -36 \\ \hline \end{array}$$

$$x \leq 15$$

8) capacity = 290

Registered = 176

how many more?

$$\begin{array}{r} 290 \\ - 176 \\ \hline 114 \end{array}$$

$$x \leq 114$$

14) At most \$35.00

$$x \leq 35.00$$

$$\begin{array}{r} a) \quad 35.00 \\ - 14.00 \\ \hline 21.00 * \end{array}$$

$$\begin{array}{r} x + 14 \leq 35 \\ - 14 \quad - 14 \\ \hline x \leq 21 \end{array}$$

b) Shirt is 30% off

$$(14.00)(30\%)$$

$$\begin{array}{r} 14 \\ x \quad .30 \\ \hline \$ 4.20 \end{array}$$

Discount Amount

$$\begin{array}{r} 14.00 \\ - 4.20 \quad \text{Discount} \\ \hline 9.80 \quad \text{New Price} \end{array}$$

$$B) (14.00)(70\%)$$

$$\begin{array}{r} 14 \\ x \quad .70 \\ \hline 9.80 \end{array}$$

$$\begin{array}{r} x + 9.80 \leq 35.00 \\ - 9.80 \quad - 9.80 \\ \hline x \leq 25.20 \end{array}$$

~~4A~~ \$150.00
10% of \$150.00 is \$15.00
.10

18) What fraction is
equivalent to -2.4

a) $-\frac{12}{5}$

c) $-\frac{8}{5}$

b) $-\frac{51}{25}$

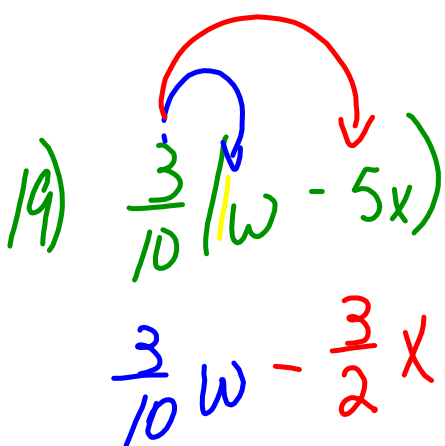
d) $-\frac{6}{25}$

$12 \div 5 = \sim$

$8 \div 5 = \sim$

$51 \div 25 = \sim$

$6 \div 25 = \sim$

$$19) \frac{3}{10} (w - 5x)$$
$$\frac{3}{10} w - \frac{3}{2} x$$
The image shows a handwritten algebraic simplification. The first line is $\frac{3}{10} (w - 5x)$. A blue arrow points from the $\frac{3}{10}$ to the w , and a red arrow points from the $\frac{3}{10}$ to the $-5x$. The second line is $\frac{3}{10} w - \frac{3}{2} x$, where the $\frac{3}{10}$ is blue and the $\frac{3}{2}$ is red.