

**Bathroom breaks are to be
taken before class!!**

Do NOT move the desk!!

Turn your phone OFF!!

Put your phone up!!

Sit down!! Be quiet!!

Prepare to work!!

Keep your hands to yourself!!

35.

$$1) 16x + 2y = 32$$

$$2y = -16x + 32$$

$$y = -8x + 16$$

$$b = 16$$

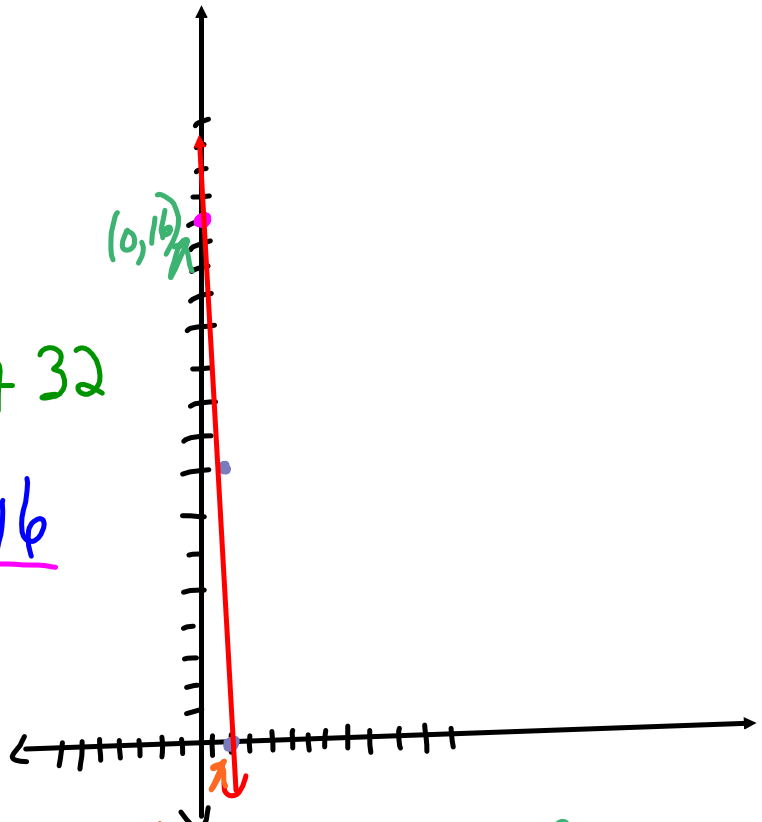
$$m = -8$$

X-Int sub 0 for y

$$16x + 2(0) = 32$$

$$16x = 32$$

$$x = 2$$



(2, 0)

Y-Int sub 0 for x

$$16(0) + 2y = 32$$

$$2y = 32$$

$$y = 16$$

$$\begin{aligned} 9) \quad 15x - 12y &= 60 \\ -12y &= -15x + 60 \\ y &= \frac{5}{4}x - 5 \\ b &= -5 \\ m &= \frac{5}{4} \quad B \end{aligned}$$

$$\begin{aligned} X\text{-Int} \\ 15x - 12(0) &= 60 \\ 15x &= 60 \\ x &= 4 \end{aligned}$$

$$\begin{aligned} Y\text{-Int} \\ 15(0) + 12y &= 60 \\ -12y &= 60 \\ y &= -5 \end{aligned}$$

$$12) 3x - 4y = -12$$

$$\begin{aligned} & x\text{-Int} \\ 3x - 4(0) &= -12 \end{aligned}$$

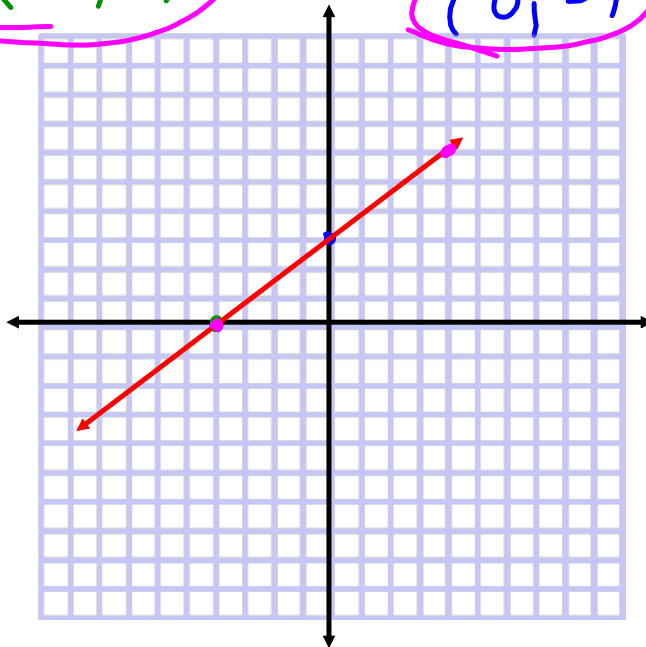
$$3x = -12$$

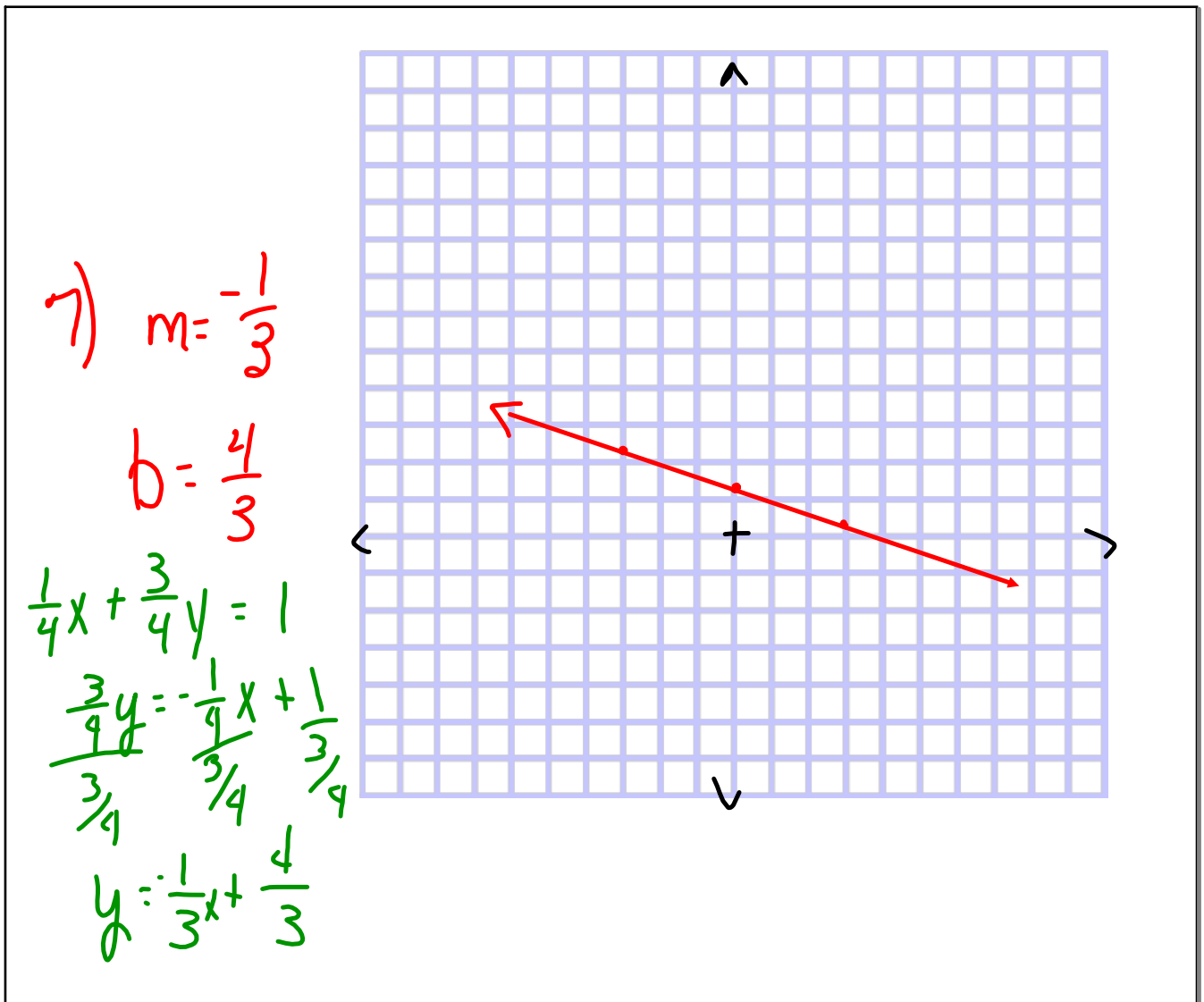
$$\begin{aligned} & \star x = -4 \\ & \text{(-4, 0)} \end{aligned}$$

$$\begin{aligned} & y\text{-Int} \\ 3(0) - 4y &= -12 \end{aligned}$$

$$-4y = -12$$

$$\begin{aligned} & \star y = 3 \\ & (0, 3) \end{aligned}$$





$$16) -16y = -24$$

\neq X-Int - none

$$y = \frac{-24}{-16} = \frac{3}{2}$$

\neq $(0, \frac{3}{2})$ Y-Int

