

Soft book Pg 15

$$b) -\frac{5}{6} \geq -\frac{1}{3} + S$$

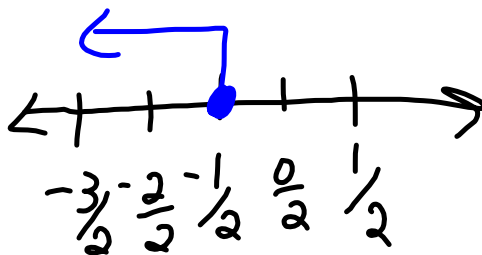
$$\begin{array}{r} +\frac{1}{3} \quad +\frac{1}{3} \\ \hline \end{array}$$

$$-\frac{3}{6} \geq S$$

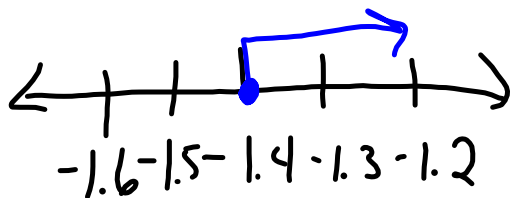
$$-\frac{1}{2} \geq S$$

$$-5 : 6 = \sim$$

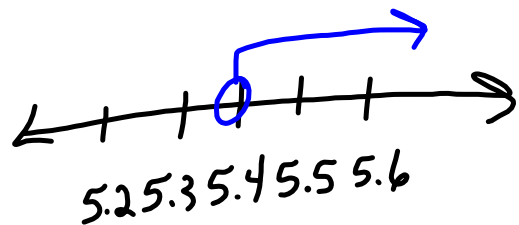
$$1 : 3 = \sim$$



$$\begin{array}{r} 7) \quad t - 3.2 \geq -4.6 \\ \quad \quad +3.2 \quad +3.2 \\ \hline \quad \quad t \geq -1.4 \end{array}$$



$$\begin{array}{r} 8) \quad -3.6 + u > 1.8 \\ \quad \quad +3.6 \quad +3.6 \\ \hline \quad \quad u > 5.4 \end{array}$$



10) Have \$ 892.47

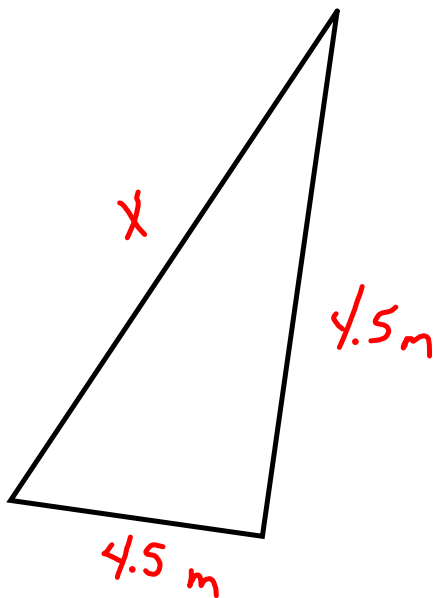
Need x

At least \$ 1,000.00

$$\begin{array}{r} 892.47 + x \geq 1,000.00 \\ -892.47 \qquad \qquad -892.47 \\ \hline \end{array}$$

$$x \geq 107.53$$

11) Perimeter



The perimeter is less than 18 meters

$$x + 4.5 + 4.5 < 18$$

$$x + 9 < 18$$

$$x < 9$$

$$9 > x$$

