

Bathroom breaks are to be
taken before class!!

Do **NOT** move the desk!!

Turn your phone **OFF**!!

Put your phone up!!

Sit down!! Be quiet!!

Prepare to work!!

Keep your hands to yourself!!

Chap 4 Sec 2

Softbook Pg 37-38

12) 6 m/h

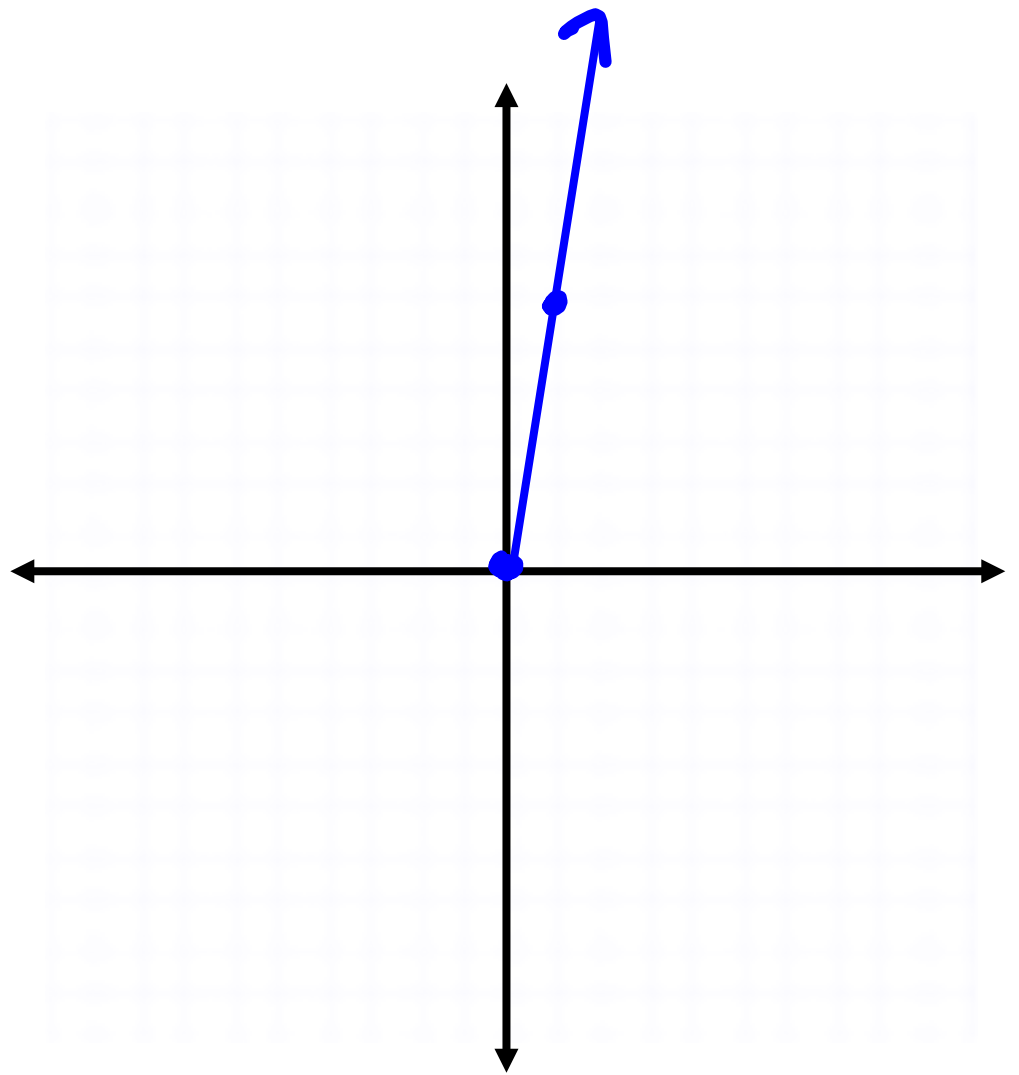
$$y = mx + b$$

$$a) y = 6x + 0$$

$$b) y = 6(2)$$

$$y = 12$$

$$d = 12 \text{ miles}$$



4 2 Homework Help

1) The output is half of the input

$$y = \frac{1}{2}x$$

$$y = \frac{x}{2}$$

$$y = f(x) = \frac{x}{2}$$

$$b) y = 3x + 2 \quad ; \quad \underline{x = 0.5}$$

$$y = 3(0.5) + 2$$

$$y = 1.5 + 2$$

$$y = 3.5$$

$$7) y = \frac{x}{2} + 9, \quad x = \underline{-12}$$

$$y = \frac{(-12)}{2} + 9$$

$$y = -6 + 9$$

$$y = 3$$

$$(-12, 3)$$

a) $y = 2x^3$, $x = 3$

$y = 2(3)^3$

$y = 2(27)$

$y = 54$

$3 \cdot 3 \cdot 3$

$9 \cdot 3$

27

~~*~~ $8 = 2 \times 5$

4×5

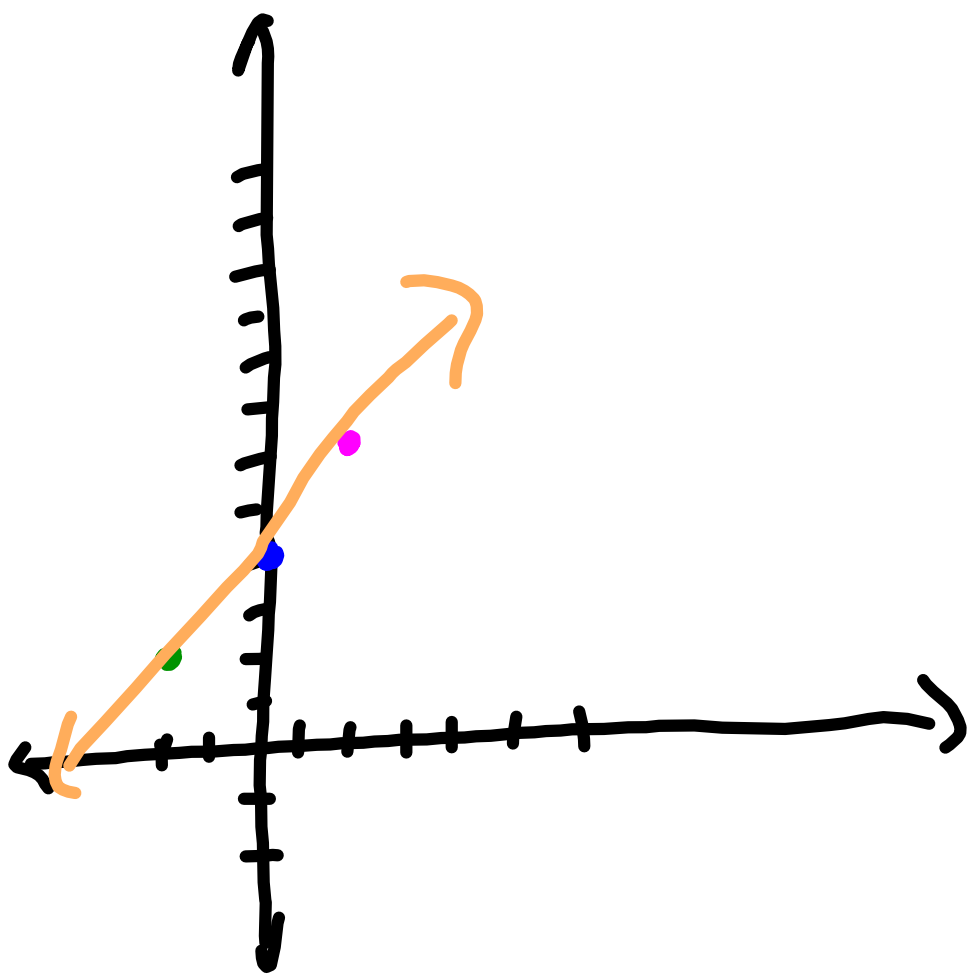
20

$$a) \quad y = x + 4$$

$$f(-2) = (-2) + 4 = 2 \quad (-2, 2)$$

$$f(0) = (0) + 4 = 4 \quad (0, 4)$$

$$f(2) = (2) + 4 = 6 \quad (2, 6)$$



~~*~~ $y = -3x - 6$

$$f(-1) = -3(-1) - 6 = -3 \quad (-1, -3)$$

$$f(0) = -3(0) - 6 = -6 \quad (0, -6)$$

$$f(1) = -3(1) - 6 = -9 \quad (1, -9)$$